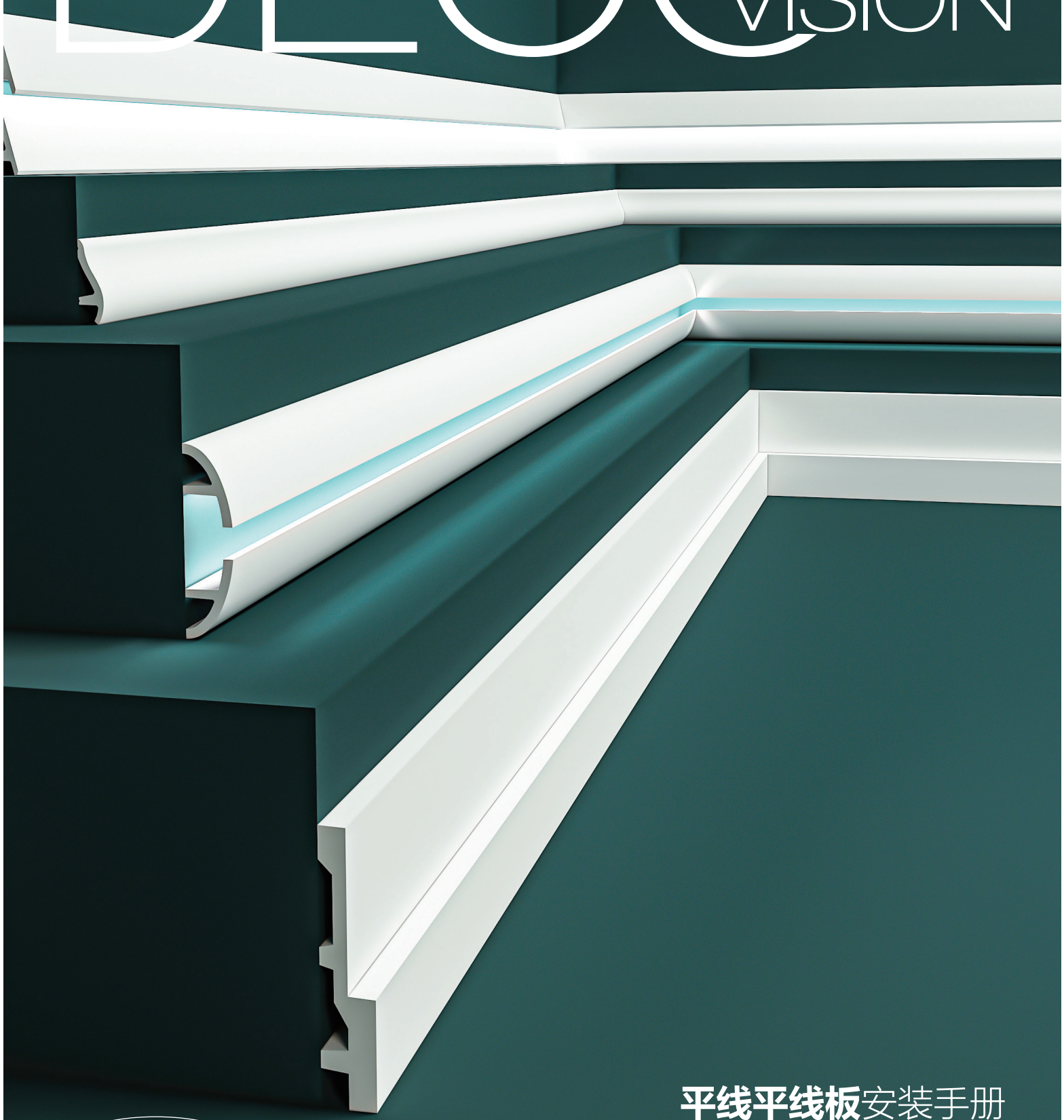


DECO VISION



平线平线板安装手册
雕花平线板安装手册
www.decovisionpu.com



1 Ready ?

原创设计，完整的系列产品带来的强烈的视觉冲击力，提供全套设计方案与设计支持

Original design, strong visual impact brought by a complete series of products, providing a full set of design solutions and design support

确定表面与环境情况 Determine the surface and environmental conditions



在室温下储存型材和粘合剂，胶水在安装24小时后生效

Store the profile and adhesive at room temperature, the glue will take effect 24 hours after installation



无明显灰尘与颗粒
No obvious dust and particles



擦拭表面
Wipe the surface



墙面或顶面平整
Flat wall or top surface



干燥环境
Dry environment



无油渍
No oil stains

工具准备 Tool preparation

胶枪、锯子、多角度切角锯盒（当墙面间角度不是直角时需要用到：角尺）

Glue gun, saw, multi-angle cutting saw box (when the angle between the walls is not a right angle, you need to use: square)



1



2



3



4

2 Set ?

胶水选择 Glue selection



使用西卡聚氨酯专用胶，一胶多用，确保落地效果

Use Sika polyurethane special glue, one glue for multiple purposes, to ensure the landing effect

3 GO !



1 Go!

素面平线板
雕花平线板

Plain Mouldings
Carving Mouldings

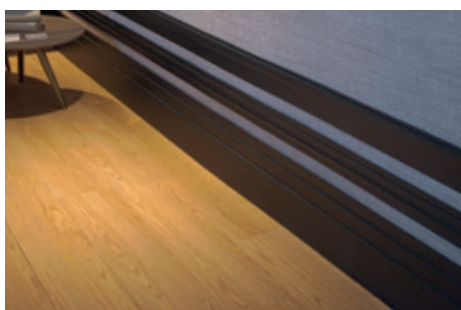
安装标记 Installation mark



使用踢脚线隐藏电缆
Use skirting to hide cables



覆盖踢脚线，非常适合翻新
Cover skirting, ideal for renovation



将踢脚线与平线板成型件结合使用
Use skirting in combination with panel mouldings



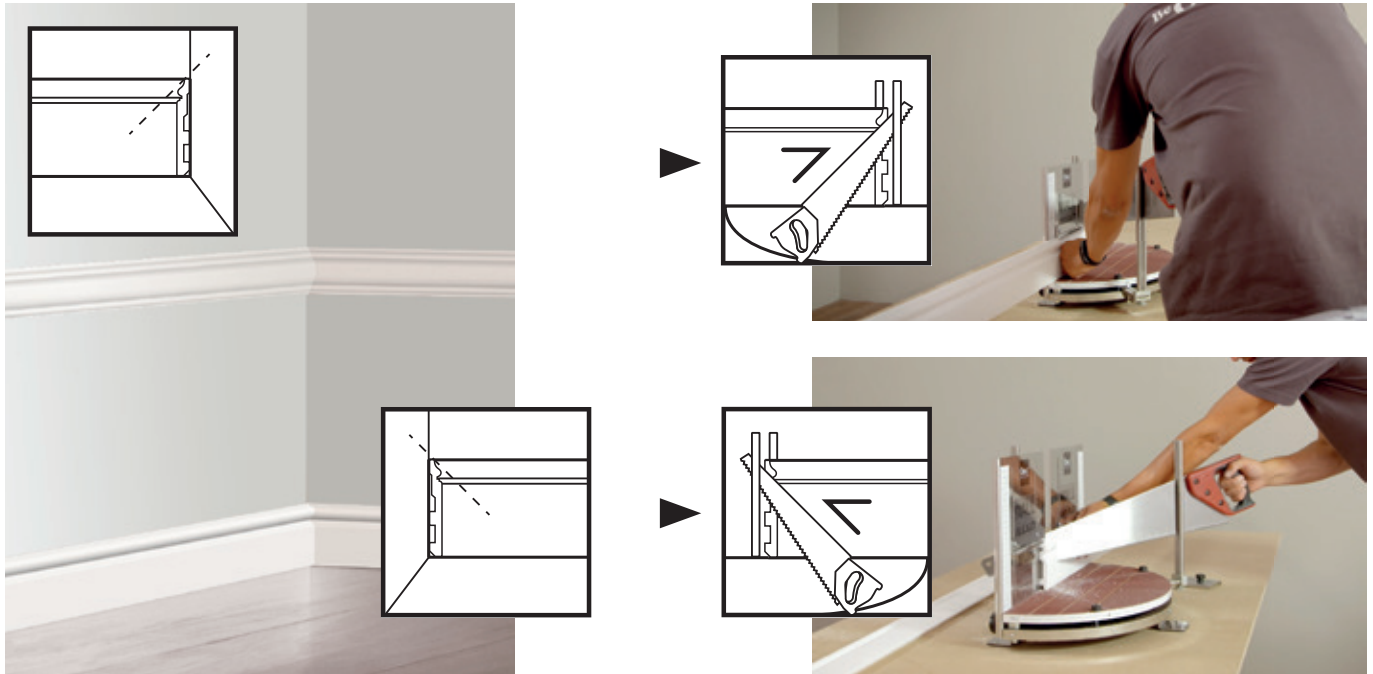
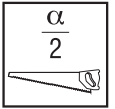
灯光线安装
Indirect lighting



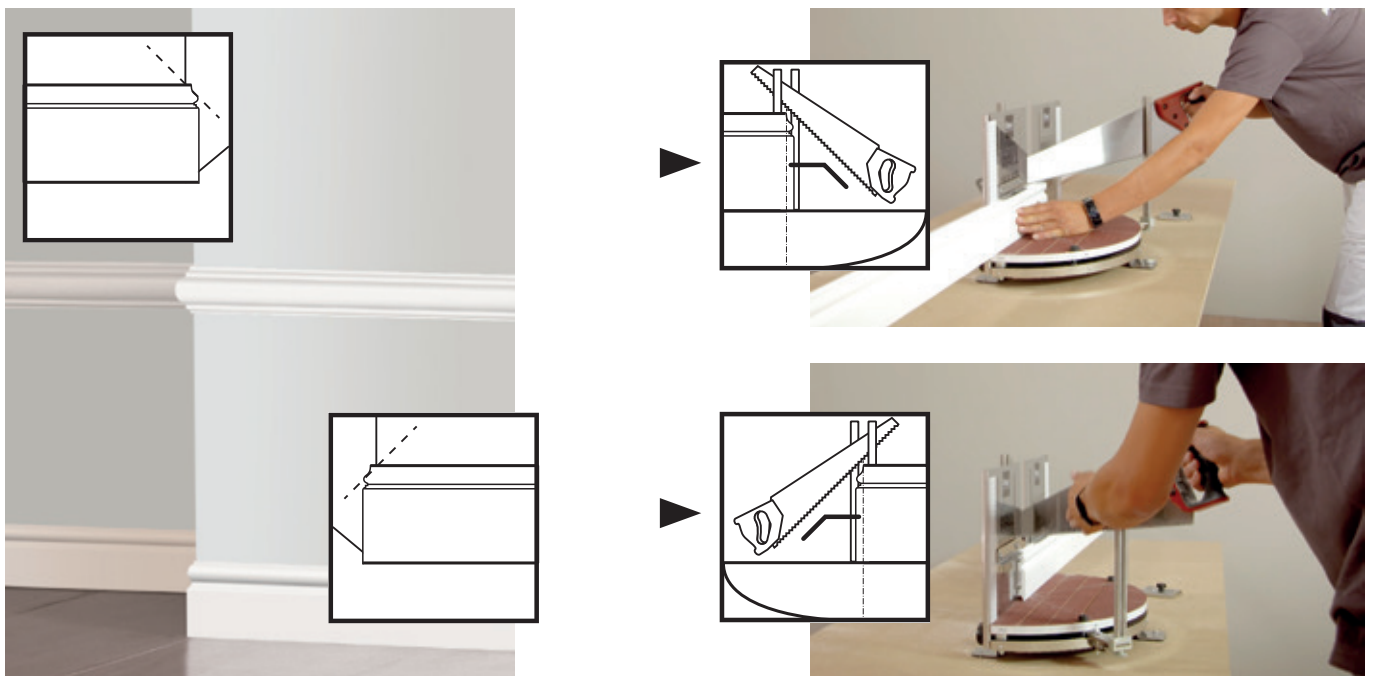
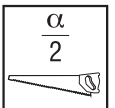
安装视频和手册
DecoVision 胶水说明操作

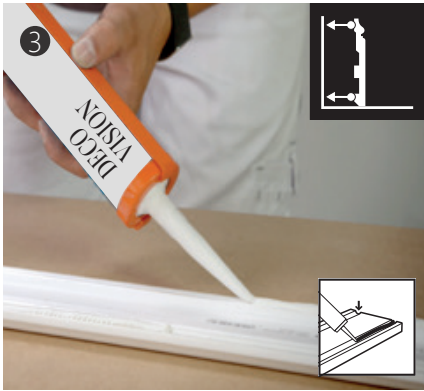
扫描二维码或访问 WWW.DECOVISIONPU.COM 安装

2A 内角切割
Inside corner cutting

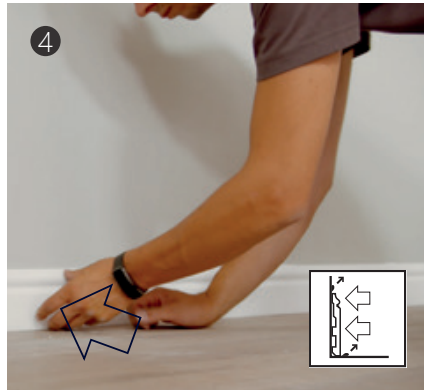


2B 外角切割
Outside corner cutting

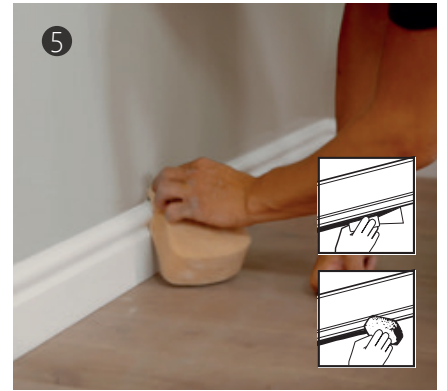




3 在贴胶面涂满西卡胶
Apply Sika Glue on the adhesive surface



4 贴紧墙面安装
Close to wall installation



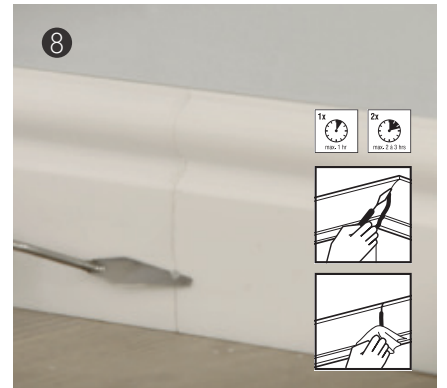
5 用海绵擦除溢出的胶水
Use a sponge to wipe off the spilled glue



6 在连接处涂上西卡胶
Apply Sika Glue to the joints

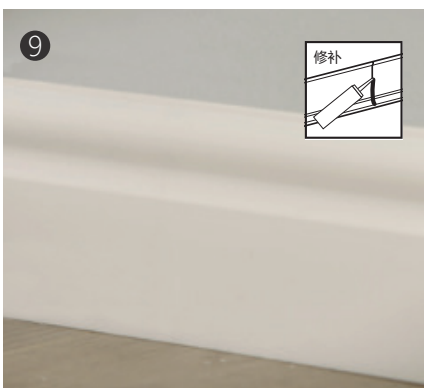


7 将线条贴紧安装
Install the lines tightly



8 擦除连接处溢出的胶
隔2-3小时擦除一次, 使用丙酮清洗
Wipe the glue overflowing at the connection,
wipe it every 2-3 hours. Clean with acetone

使用水性原子灰修补缝隙
Repair gaps with water-based putty



完成后就可以上色了
After finishing, you can paint

